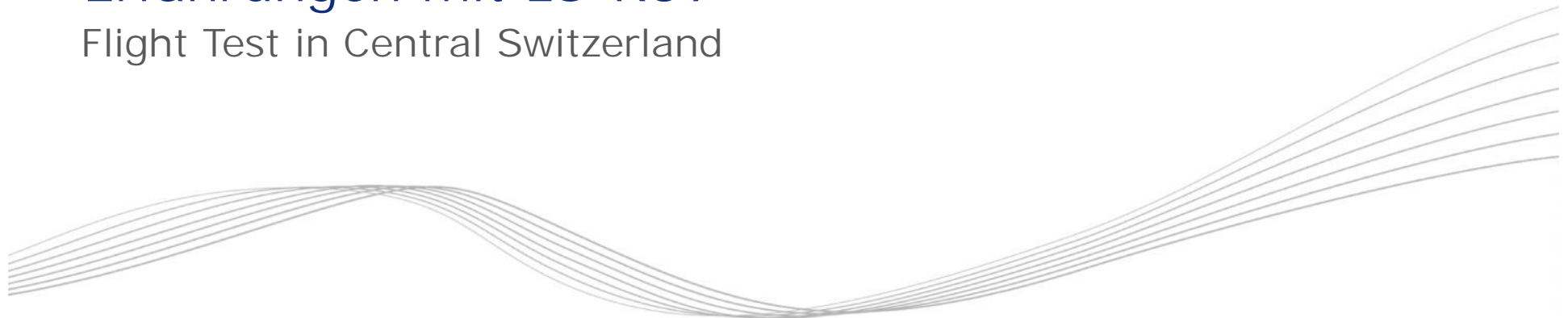




Erfahrungen mit LS-R39

Flight Test in Central Switzerland



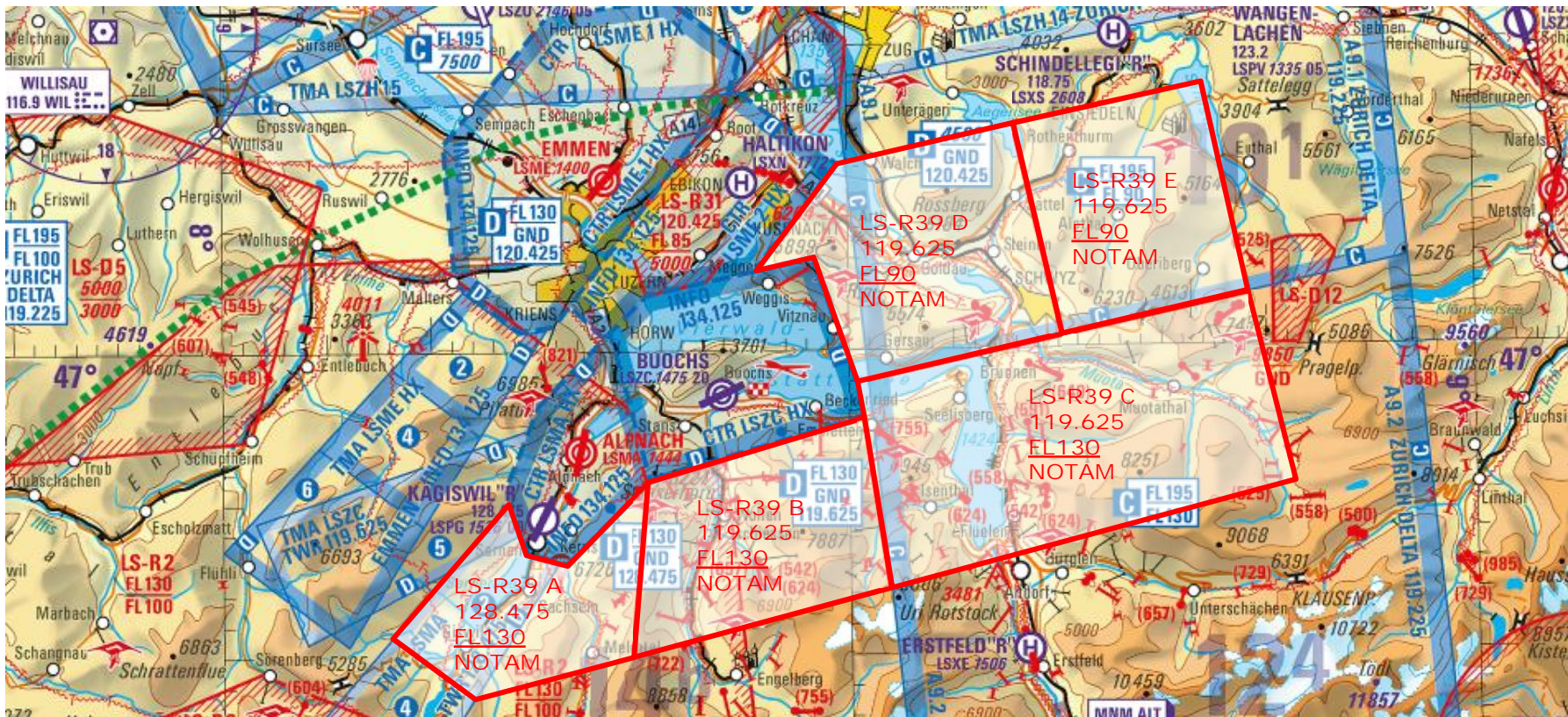
Experiences LS-R39

Summary LSZC 2016



- Diverse Kundens Schulungen (Militär und Zivil)
- SID WIL 2A: ca. 487
- RNAV A: ca. 215
- LS-R39: 69x aktiviert, ca. 41x benutzt = Ratio 0.59
- Diverse Kunden ABAG
- Segelfluglager, Fluglehrerprüfungen, CISM, Hängegleiter, Heli, Bodenaktivitäten

LS-R39 A/B/C/D/E



Experiences LS-R39 Balance

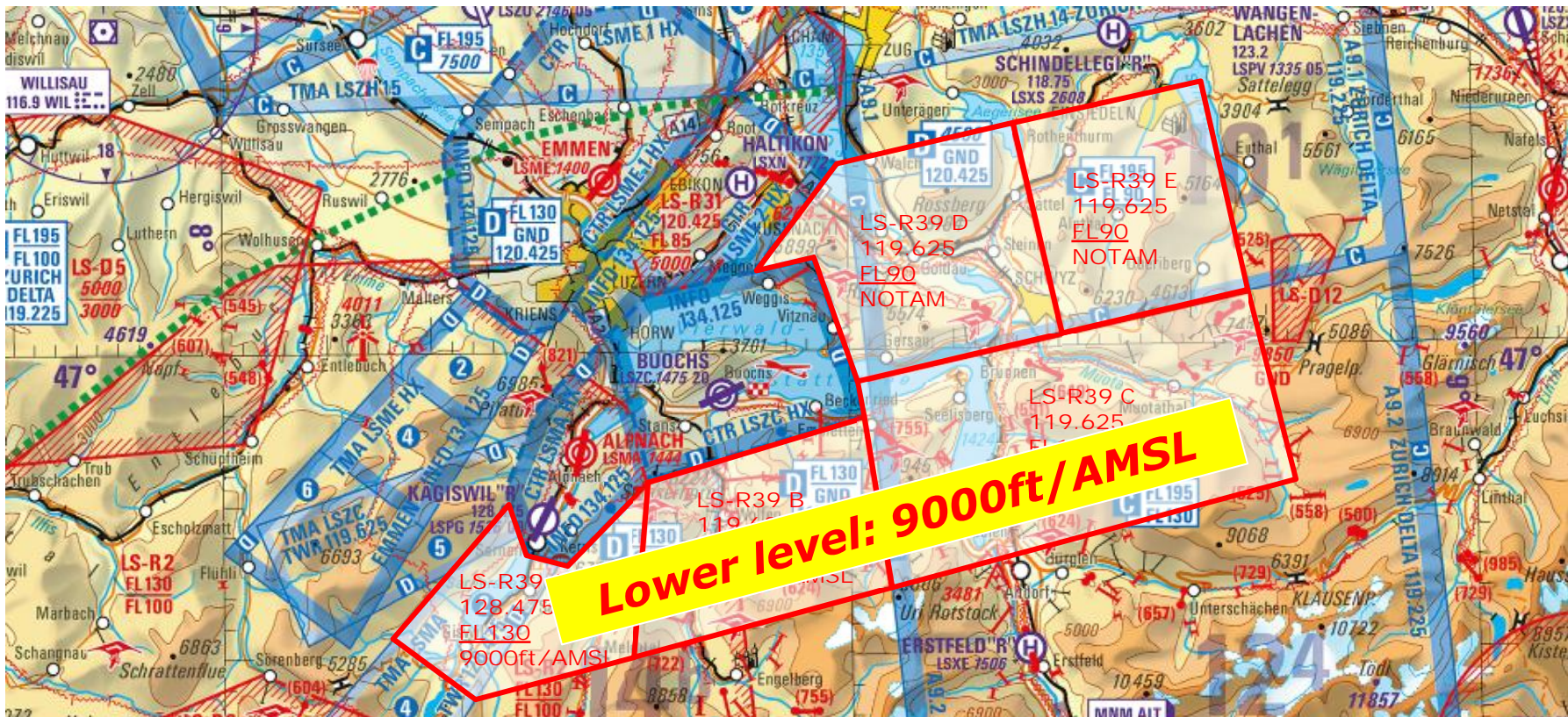


- LS-R 39 increases flight safety and test efficiency
- Little conflicts with General Aviation (engined, glider, hang glider, etc.)
- No/little flexibility in reservation of R-39
- ... leads to poor DABS-constructs ...
- VOICE-VOICE-VOICE

Very many thanks for your discipline
and cooperation!



LS-R39 A/B/C/D/E: beyond 2018?



LS-R39 A/B/C/D/E: beyond 2018?



- Exclusive Airspace G
- Activation: as short as possible
- Only A, B, C
- Lower Limit: 9000ft/AMSL
- Managed by ATC
- Crossing with clearance